

GOODWE
Smart Energy Innovator

SUNCAKE

BALCONY SOLAR SYSTEM



en.pvbm.com/products/suncake



Balcony Solar Power System

GOODWE
Smart Energy Innovator

ENJOY SOLAR, A PIECE OF CAKE

A portable solar system turns your balcony into a sunny power station, providing effortless clean energy wherever you live, play, or relax.



Plug & Play Simplicity



Smart & Cost-Effective



DIY

ALL-IN-ONE BALCONY SOLAR KIT



PV Panels



Microinverter



AC & DC Cables



Accessory Straps

Product System Solution – Strap-mounted Balcony PV System



Products Launch Plan

Solution	System Capacity	Panel unit	Straps	Mounting	Microinverter	Hook	DC Cable	AC Cable
Straps Mountaging	820W	4pcs	/	Straps*40	800W	1pcs	4 pcs(2m*2,1m*2)	1pcs (5m)
Bracket	820W	4pcs	/	Bracket*4sets	800W	1pcs	4 pcs(2m*2,1m*2)	1pcs (5m)
Battery	820w+1920wh+	4pcs	1920wh+ Stackbale	Straps/Bracket	800W	1pcs	4 pcs(2m*2,1m*2)	1pcs (5m)



PV panel 205W



Microinverter



Micro-Battery



Accessory



Straps
(Stainless steel)



Bracket
30°-50°



DC Cable



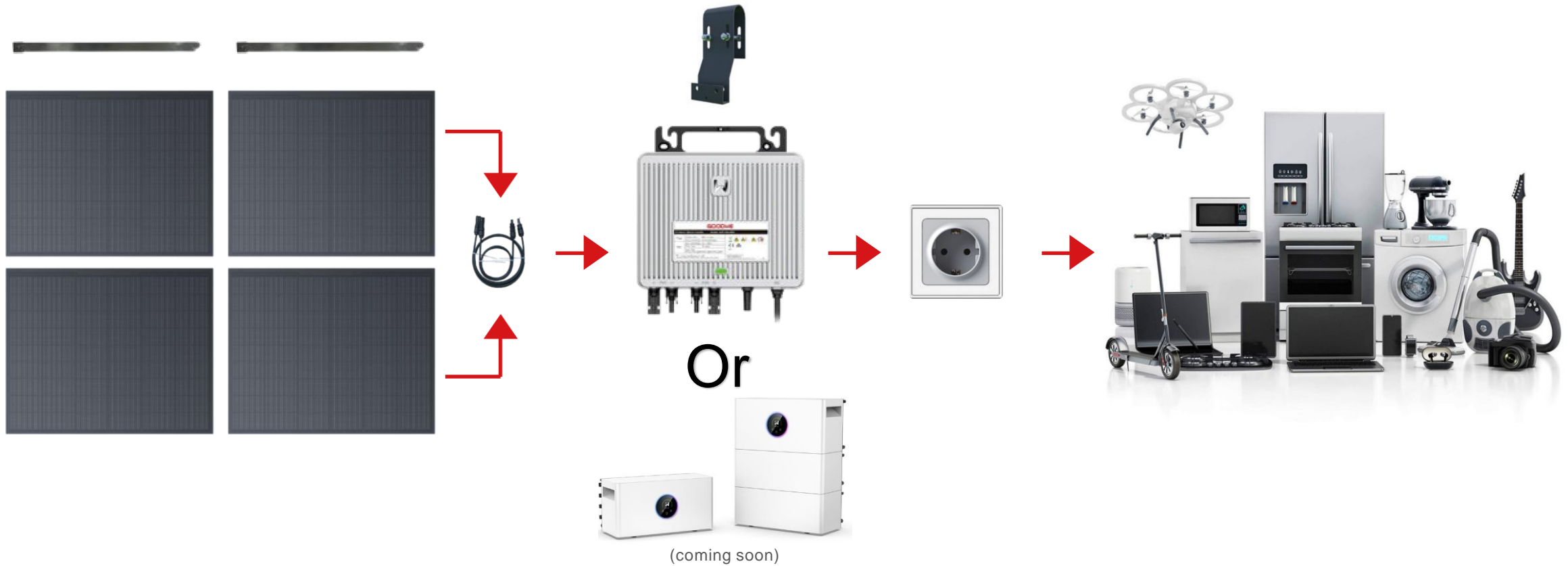
AC Cable



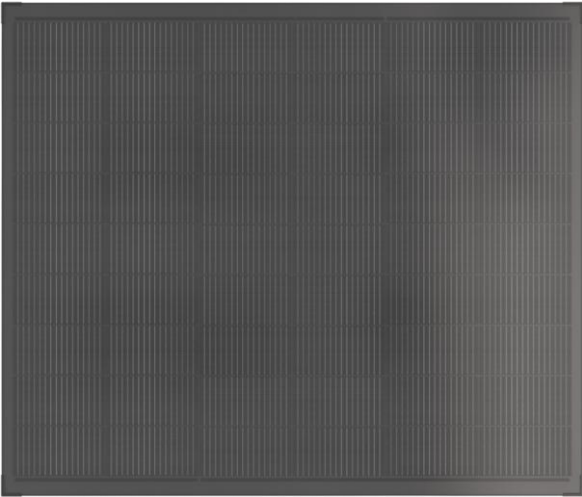
APP : Sems+

Product System Solution – Strap-mounted Balcony PV System

GOODWE
Smart Energy Innovator



Balcony Solar Power System - Suncake series 205W



Front

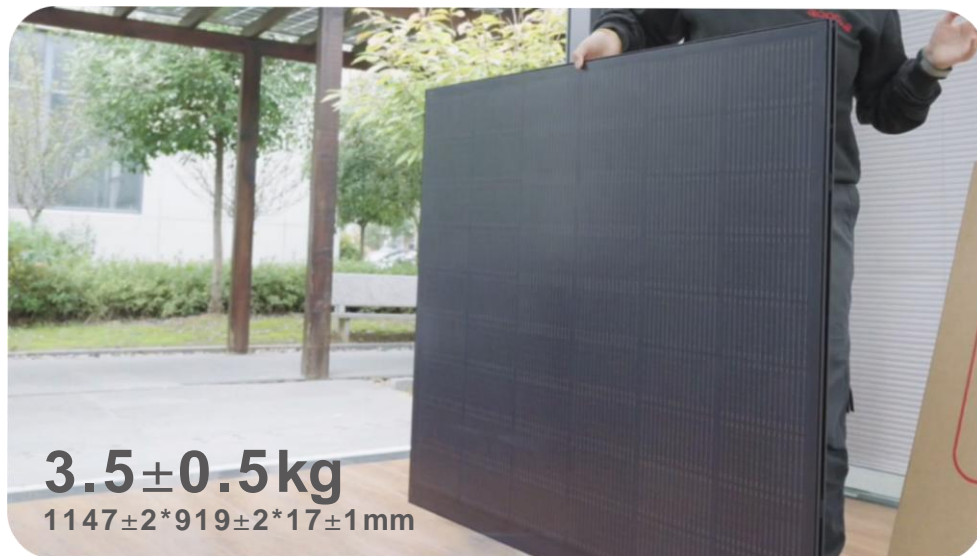


Back

Structural Data		BMM-T1/054A
Dimension	1147±2*919±2*17±1mm	
Weight	3.5±0.5kg	
Cell Type	N-type Topcon Half Cells(54 pcs)	
Cable	4mm²	
Electrical Data (STC)		
Power	205W	
Power/m²	194W/m²	
Voltage at Max Power (Vmpp)	16.60V	
Voltage at Open Circuit (Voc)	20.31V	
Current at Max Power (Impp)	12.35A	
Current at Short Circuit (Isc)	12.65A	
Operation Conditions		
Max. Front Side Static Load	2400Pa	
Max. Rear Side Static Load	2400Pa	
Maximum System Voltage	1500V	
Maximum Fuse Rating Operation	25A	
Temperature Range	-40°C~-+85°C	
The Rated Operating Temperature	45±2°C	
Fire-resistant Class	C	
Ingress Protection Rating	IP67	
Protection Class	II	
Temperature Parameter		
Isc TP	+0.03%/°C	
Voc TP	-0.27%/°C	
Pmpp TP	-0.30%/°C	

Balcony Solar Power System - Suncake series 205W

GOODWE
Smart Energy Innovator



Lightweight & Compact

Ultra-light design minimizes structural load, making installation effortless. Single-person installation with no specialized tools required. 80% Labor & Time Saving!



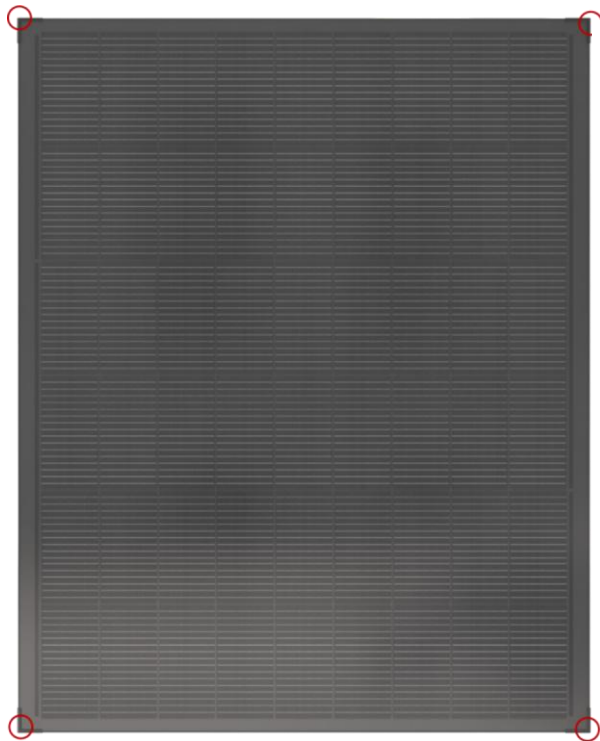
Sleek & Modern Design

All-black, matte finish creates a stylish balcony aesthetic while reducing glare.



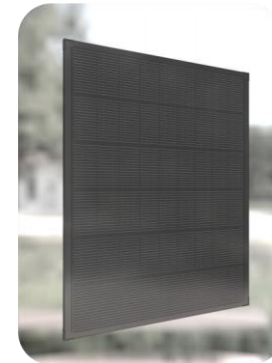
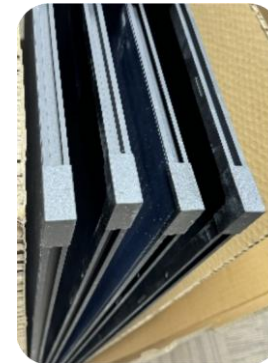
Balcony Solar Power System - Suncake series 205W

GOODWE
Smart Energy Innovator



Built to Last

Impact-resistant frame with reinforced edges, corner protectors, and back ribs for stability.



Weather-Ready

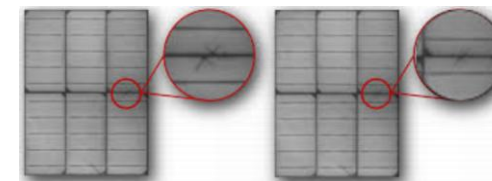
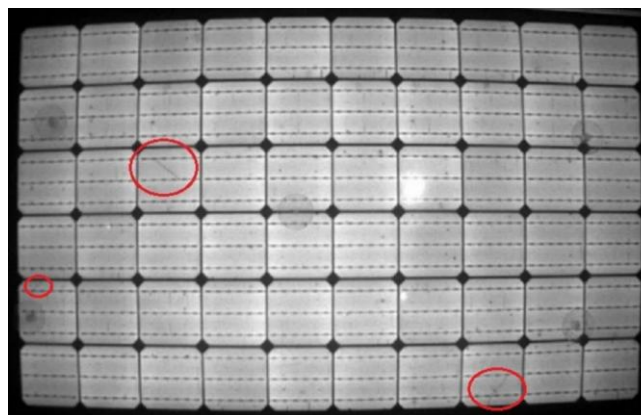
Withstands up to 2,400 Pa loads, preventing deformation and hidden cracks.

Balcony Solar Power System - Suncake series 205W

GOODWE
Smart Energy Innovator

Deform-resistant

Preventing deformation and hidden cracks



TUV NORD

CE

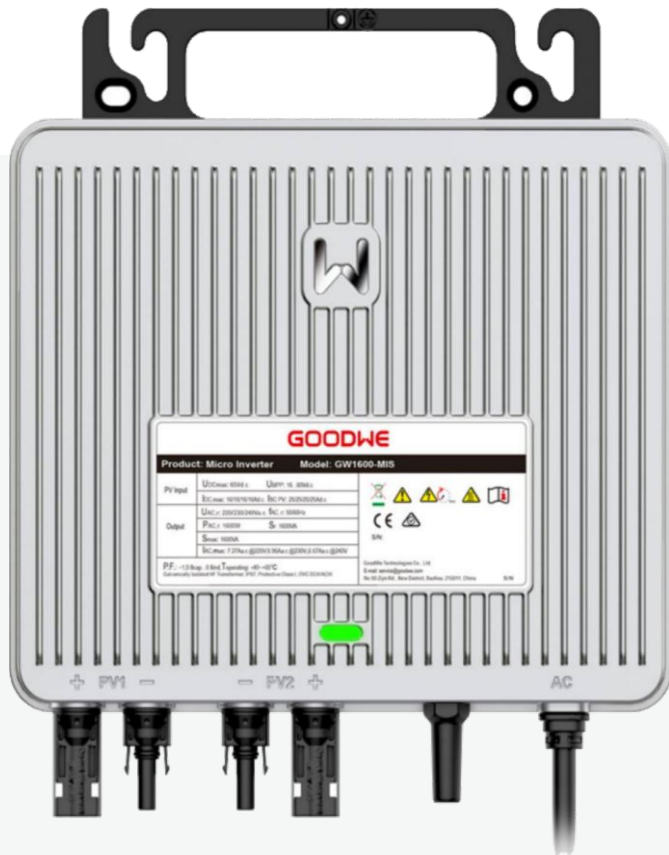
Balcony Solar Power System – Microinverter

Front/Back



Parameter	Value
Output Power	800W
PV Input Power	960W
Maximum Input Current	2*18A
Number of Strings/MPPTs	2
MPPT Voltage Range	13-60V
Maximum Efficiency	96.4%
Communication Methods	WiFi, Bluetooth
Warranty	12 years

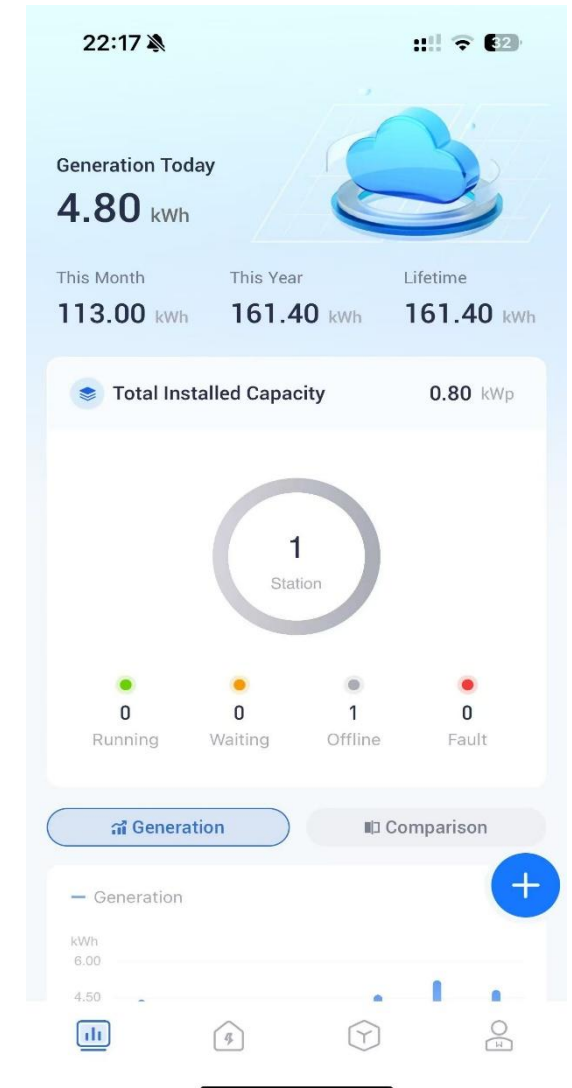
Balcony Solar Power System – Microinverter



Easy Communication

Built-in Bluetooth & WiFi enable remote monitoring and easy control via the SEMES+ APP.

GOODWE
Smart Energy Innovator



Balcony Solar Power System – Microinverter

GOODWE
Smart Energy Innovator



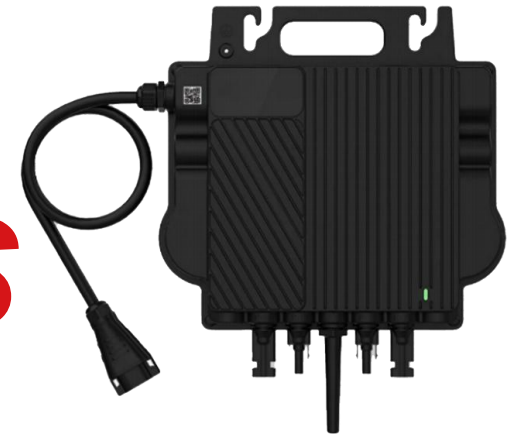
Full die-cast aluminum



Fine craftsmanship

IP67-rated protection and a full die-cast aluminum body ensure superior durability, corrosion resistance, and salt-mist protection. 15-year expected lifespan and 12-year product warranty ensure long-term performance and peace of mind.

VS



Plastic Shell

Balcony Solar Power System – Microinverter



Wider MPPT Voltage Range

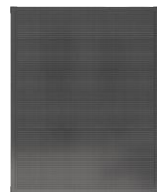
Supports a broad input **voltage range (13V-60V)**, ensuring compatibility with various PV module configurations.



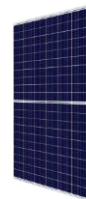
2 in 1 microinverter



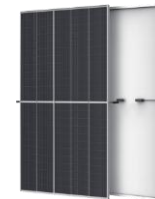
Suncake-200w



Suncake-205w



Poly 300W



Perc 400W



Top-con 500W-700W

Other Accessories

GOODWE
Smart Energy Innovator



Rapid Discharge Function

Rapid discharge drops AC voltage to a safe 36V within 100ms after disconnection, enhancing safety in case of emergencies.



Other Accessories



Straps (stainless steels)

The system comes with 40 straps, flexible and reusable.



Microinverter Hook



DC Cable



5m AC Cable

The complete system (including AC and DC cables):

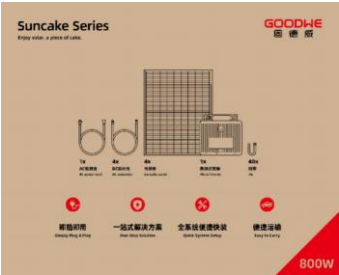
1 x 5m AC cable;
4 x (2m2,1m2) DC cables (for 800W system) / 2 x (2m1,1m1) DC cables (for 400W system)

Microinverter sold separately: Does not include 5m AC and DC cables.

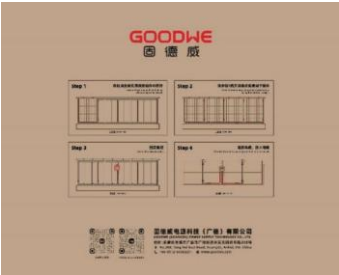
Balcony PV System Product Packaging



What's in the Box



Front



Back



Side



Microinverter 1Set

PV panel 205W 4Pieces



DC Cable



Accessory



AC Cable



Straps (Stainless steel)



User Manual

Features & Highlights

GOODWE
Smart Energy Innovator



**All-in-One
Solution**



High Efficiency



**Lightweight
and Portable**



Safe & Reliable

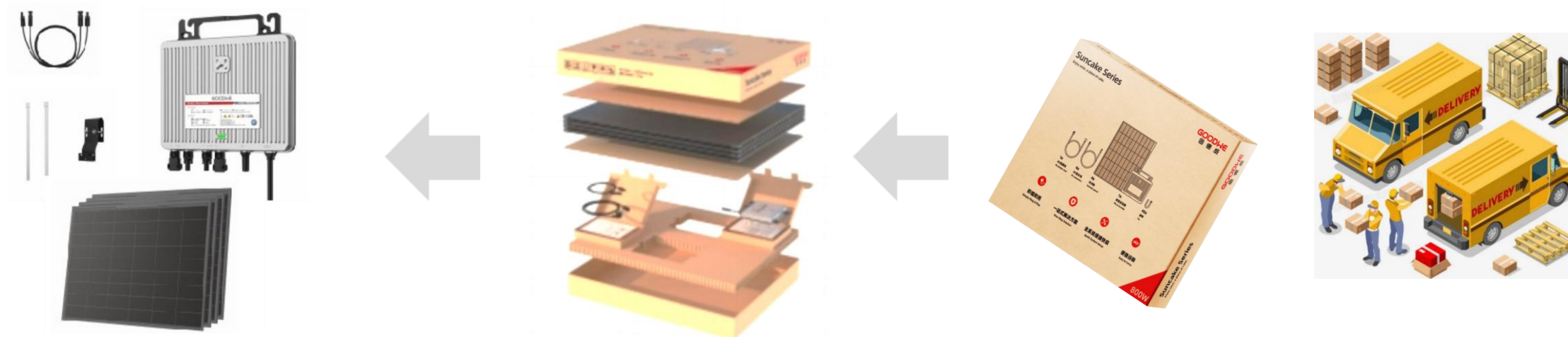


**DIY Installation
for Various
Applications**

Features & Highlights

GOODWE
Smart Energy Innovator

"All-in-One" System, Saving Time, Effort, and Cost



GoodWe's fully self-developed and self-produced "integrated" system

- ✓ One-stop product selection, low decision-making cost
- ✓ Pre-sales and after-sales "one-stop" service
- ✓ Achieves worry-free purchase, more peace of mind

"All-in-one" packaging

- ✓ Can be directly shipped, convenient transportation
- ✓ Saves 50% on transportation costs

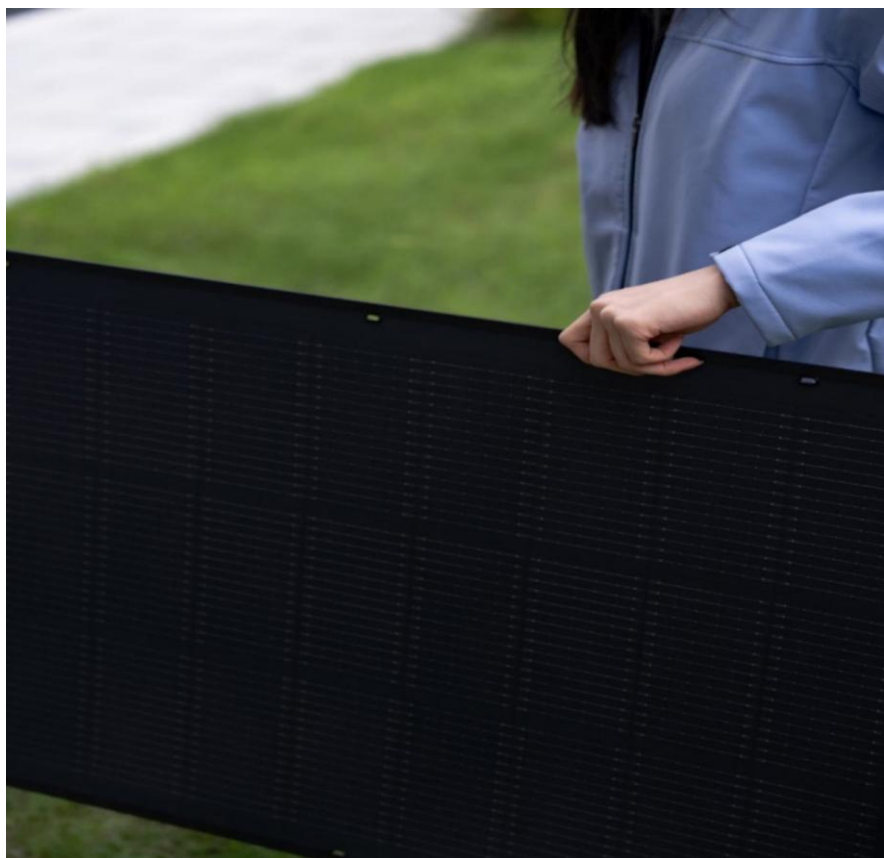


Features & Highlights



Lightweight, Easy to Carry, "Saving Effort"

- 3.5kg/m² lightweight components; can be carried with one hand by a woman.



- The entire system package weight: 21kg
- (Equivalent to the weight of a fully packed 24-inch suitcase, can be carried by one person).



- Package dimensions: 1175 x 965 x 155mm
- Can be placed in a car trunk, more convenient for transportation, solving the problem of conventional balcony PV systems requiring trucks and not being able to use a car trunk for transportation.



Features & Highlights



High efficiency

- Solar Cell **25%**
- Microinverter **96.4%**

Generation

2025-02-23 ~ 2025-03-22

Generation : 109.90 kWh Revenue : 24.18 CNY



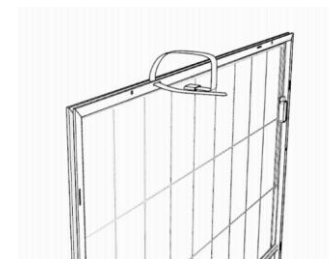
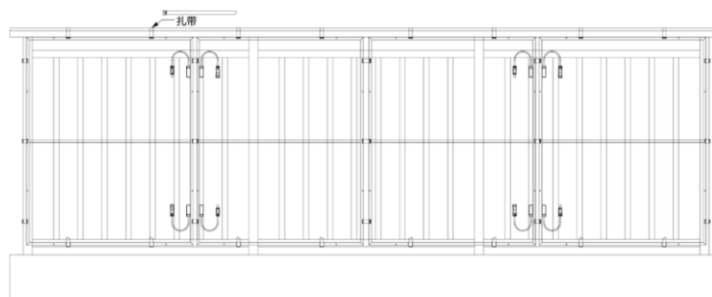
28days 109.9kwh Generation.3.925kwh Per day



Balcony PV System Installation (Strap-mounted)

Installation Step 1

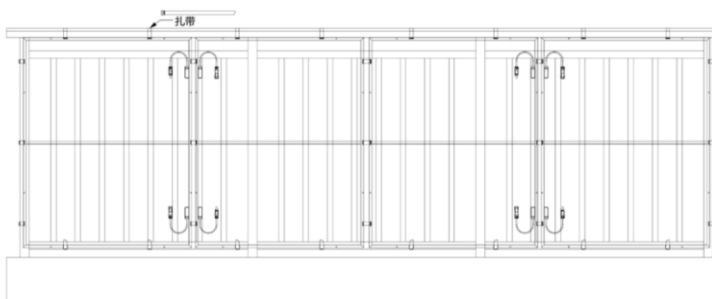
Fix the product with straps



Pass stainless steel straps through the strap holes on the flexible balcony PV frame.

Installation Step 2

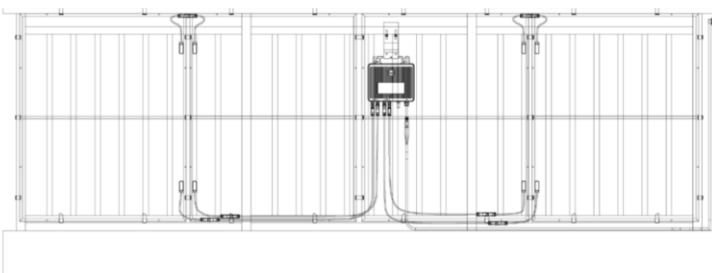
Install the microinverter in a suitable position



Vertical Installation
(Balcony height > 1150mm)

Installation Step 3

Connect the cables

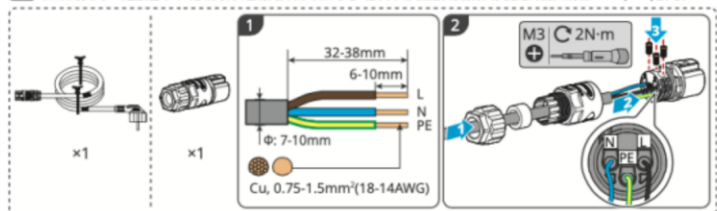


System installation (Micro Inverter)

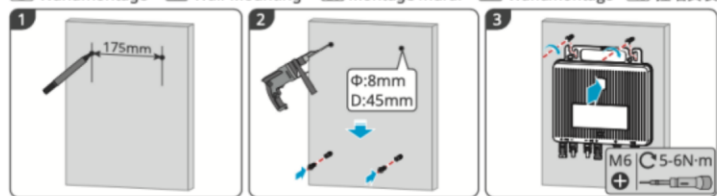
1 DE Installation EN Installation FR Installation NL Installatie ZH 安装



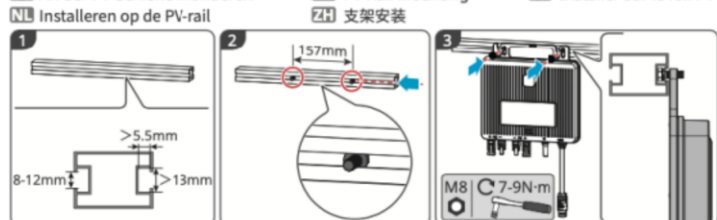
ZH 如果购买的AC连接器不带线, 请联系经销商并由专业的电气技术人员压接线缆。推荐使用的插头规格: 250V/16A/接地。



DE Wandmontage EN Wall-Mounting FR Montage mural NL Wandmontage ZH 挂墙安装

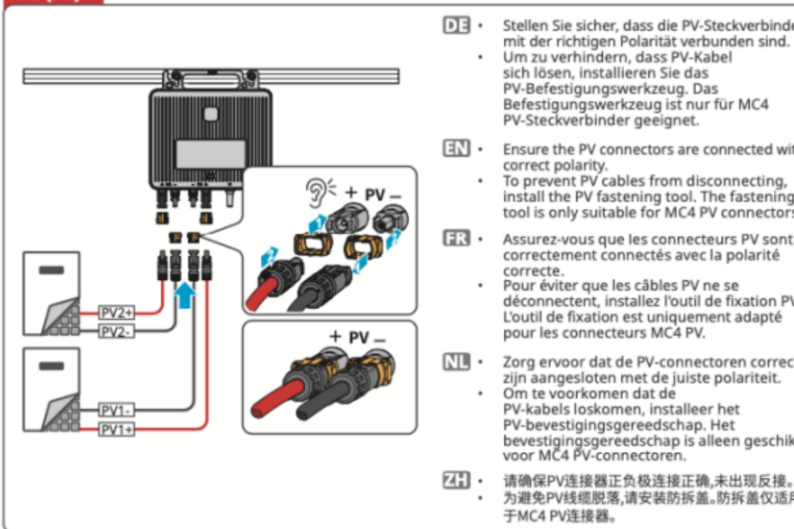


DE An der PV-Schiene montieren EN PV Rail Mounting FR Installer sur le rail PV NL Installeren op de PV-rail ZH 支架安装



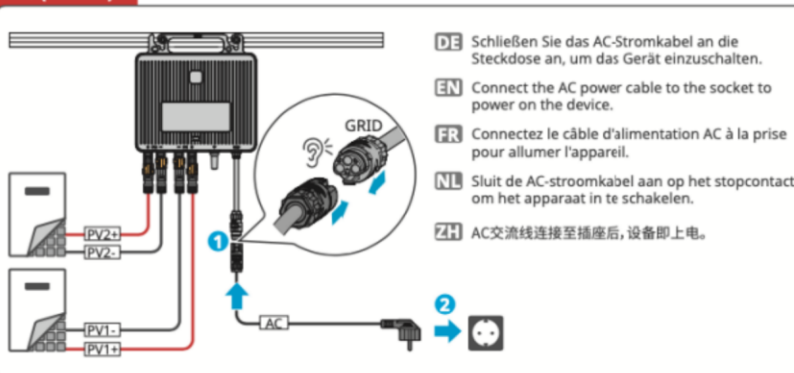
2 DE Elektroanschluss EN Electrical Connection FR Raccordement électrique NL Elektrische aansluiting ZH 电气连接

DC (PV)



- DE • Stellen Sie sicher, dass die PV-Steckverbinder mit der richtigen Polarität verbunden sind. Um zu verhindern, dass PV-Kabel sich lösen, installieren Sie das PV-Befestigungswerkzeug. Das Befestigungswerkzeug ist nur für MC4 PV-Steckverbinder geeignet.
- EN • Ensure the PV connectors are connected with correct polarity. To prevent PV cables from disconnecting, install the PV fastening tool. The fastening tool is only suitable for MC4 PV connectors.
- FR • Assurez-vous que les connecteurs PV sont correctement connectés avec la polarité correcte. Pour éviter que les câbles PV ne se déconnectent, installez l'outil de fixation PV. L'outil de fixation est uniquement adapté pour les connecteurs MC4 PV.
- NL • Zorg ervoor dat de PV-connectoren correct zijn aangesloten met de juiste polariteit. Om te voorkomen dat de PV-kabels loskomen, installeer het PV-bevestigingsgereedschap. Het bevestigingsgereedschap is alleen geschikt voor MC4 PV-connectoren.
- ZH • 请确保PV连接器正负极连接正确, 未出现反接。为避免PV线缆脱落, 请安装防拆盖。防拆盖仅适用于MC4 PV连接器。

AC (L/N/PE)



- DE • Schließen Sie das AC-Stromkabel an die Steckdose an, um das Gerät einzuschalten.
- EN • Connect the AC power cable to the socket to power on the device.
- FR • Connectez le câble d'alimentation AC à la prise pour allumer l'appareil.
- NL • Sluit de AC-stroomkabel aan op het stopcontact om het apparaat in te schakelen.
- ZH • AC交流线连接至插座后, 设备即上电。

LED	DE Beschreibungen NL Beschrijvingen	EN Descriptions ZH 说明	FR Descriptions
	DE Langsam blinkendes Grün = Gerät ist eingeschaltet und befindet sich im Standby-Modus. EN Slow blinking green = Equipment on and in the standby mode. FR Lent clignotement vert = L'équipement est sous tension et en mode Veille. NL Langzaam knipperend groen = De omvormer is ingeschakeld en staat in stand-by. ZH 绿灯慢闪: 设备已上电, 处于待机模式。		
	DE Schnell blinkendes Grün = Gerät startet und befindet sich im Selbsttestmodus. EN Fast blinking green = equipment starting and in the self-check mode. FR Rapide clignotement vert = L'équipement démarre et est en mode d'autocontrôle. NL Snel knipperend groen = apparatuur start op en staat in de zelfcontrolemodus. ZH 绿灯快闪: 设备已启动, 处于自检模式。		
	DE Stetiges Grün = Beide PV-Eingänge sind verfügbar, und der Wechselrichter speist ordnungsgemäß Strom ins Netz. EN Steady green = The two PV inputs are available, and the inverter is feeding power to the grid properly. FR Vert fixe = Les deux entrées PV sont disponibles et l'onduleur alimente correctement le réseau. NL Constant groen = Beide PV-ingangen zijn beschikbaar en de omvormer levert correct stroom aan het netwerk. ZH 绿灯常亮: 设备正常并网发电, 两路输入均正常。		
	DE Blinkendes grün und rot = Nicht alle PV-Eingänge sind verfügbar, aber der Wechselrichter speist weiterhin Strom ins Netz. Die beiden Blinks zeigen den Status von PV1 und PV2 an. Ein rotes Blinken bedeutet abnormalen PV-Eingang, ein grünes Blinken bedeutet normalen PV-Eingang. Beispiel: Wie auf der linken Seite gezeigt, ist PV1 abnormal und PV2 funktioniert normal. EN Blinking green and red = Not all PV inputs are available, but the inverter is still feeding power to the grid. The two blinks represent the status of PV1 and PV2, respectively. A red blink indicates abnormal PV input, and a green blink indicates normal PV input. Example: As shown on the left, PV1 is abnormal, and PV2 is working normally. FR Clignotement vert et rouge = Tous les entrées PV ne sont pas disponibles, mais l'onduleur continue d'alimenter le réseau. Les deux clignotements représentent l'état de PV1 et PV2 respectivement. Un clignotement rouge indique une entrée PV anormale, un clignotement vert indique une entrée PV normale. Exemple : Comme montré à gauche, PV1 est anormal et PV2 fonctionne normalement. NL Knipperend groen en rood = Niet alle PV-ingangen zijn beschikbaar, maar de omvormer blijft stroom naar het net leveren. De twee knipperingen geven de status van PV1 en PV2 aan. Een rode knippering betekent een abnormale PV-ingang, een groene knippering betekent een normale PV-ingang. Voorbeeld: Zoals links weergegeven, is PV1 abnormaal en werkt PV2 normaal. ZH 红绿灯闪烁: 设备并网发电, 但存在输入异常, 两次闪烁分别代表两路输入PV1和PV2状态。红灯闪烁表示PV输入异常, 绿灯闪烁表示PV输入正常。举例: 如左图所示, 代表PV1异常, PV2正常并网。		
	DE Doppeltes rotes Blinken = Störung im öffentlichen Stromnetz. EN Double blinking red = Utility grid fault. FR Double clignotement rouge = Défaillance du réseau électrique. NL Twee keer knipperend rood = storing elektriciteitsnet. ZH 红灯两次闪烁: 电网故障。		
	DE Rotes Licht leuchtet dauerhaft = Gerätefehler. EN Steady red = Equipment fault. FR Rouge fixe = Défaillance l'équipement. NL Constant rood = storing in apparatuur. ZH 红灯常亮: 设备故障。		
	DE Schnelles grünes und rotes Blinken = Software wird aktualisiert. EN Fast blinking green and red = Updating software. FR Vert et rouge clignotant rapidement = Mise à jour du logiciel. NL Snel knipperend groen en rood = Software wordt bijgewerkt. ZH 红绿灯交替快闪: 设备正在更新软件。		

After Installation

GOODWE
Smart Energy Innovator

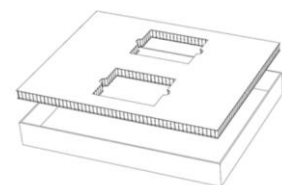


Warranty and Shipment

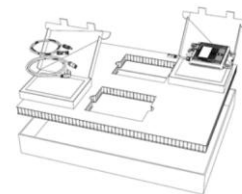
- Panels Product Warranty – 5Years
- Performance Warranty – 12 Years
- Micro Inverters Product Warranty – 12 Years Design-15Years



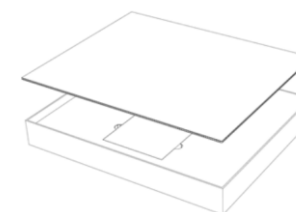
Shipment	40 ft HQ
Pallets	40
Sets	320 (280+40)
Weight (kg)	9880
Dimension Per Pallet	1120*1190*1100mm
Weight Per Pallet (kg)	220
Sets Per Pallet	7



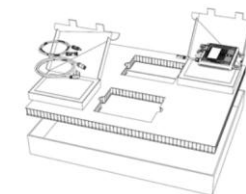
Place a 50mm thick paper divider at the bottom of the lower cover



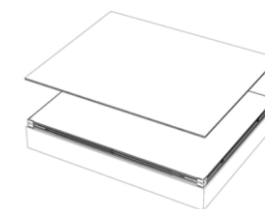
Place microinverters and accessories



Place a 10mm thick paper divider



Place 4 modules sequentially



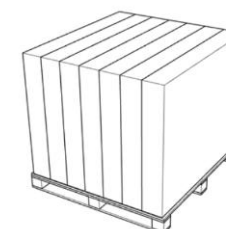
Place a 10mm thick paper divider and cover with the top panel



If loading into a high cube container, place two more packs flat on the pallet



Place wooden corner protectors on all four corners and secure the entire pallet



Stack 7 packs sequentially on the pallet

All In One Micro-Storage



Coming Soon

All In One Micro-Storage

GOODWE
Smart Energy Innovator

GoodWe mini Eco-Smart Solar EnergyStorage System

Smart & Cost-Effective

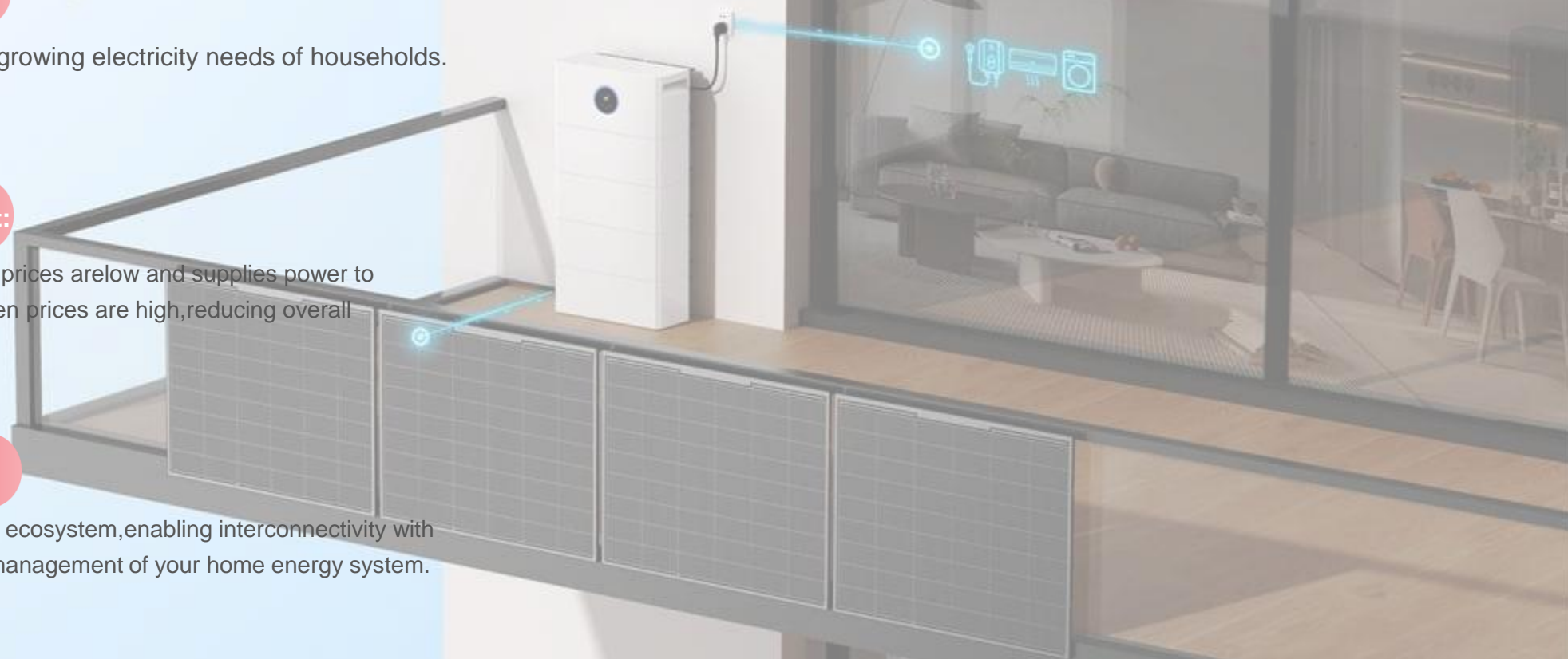
- ☑ Specifically designed to meet the growing electricity needs of households.

Dynamic Energy Price Adjustment:

- ☑ Charges the battery when electricity prices are low and supplies power to household loads from the battery when prices are high, reducing overall electricity costs.

Smart Home Integration:

- ☑ Connects to the Homey smart home ecosystem, enabling interconnectivity with other smart devices and intelligent management of your home energy system.



All In One Micro-Storage

Home Appliance Design

- ✓ The integrated appearance design enhances the overall integrity and aesthetics of the product. An intuitive user interface enhances ease of use.

Quick and Easy Installation

- ✓ In just a few minutes and without professional help, the energy storage unit can be installed on balconies, gardens, roofs, or walls. Users can easily install it themselves, significantly reducing investment costs.

High Protection Rating (IP65):

- ✓ Suitable for both outdoor and indoor installation, withstanding wind and rain. The system offers high reliability, a 10-year warranty, and a 15-year design life. The battery is designed for a cycle life of 6000 cycles.



All In One Micro-Storage

1500W Off-Grid Output:

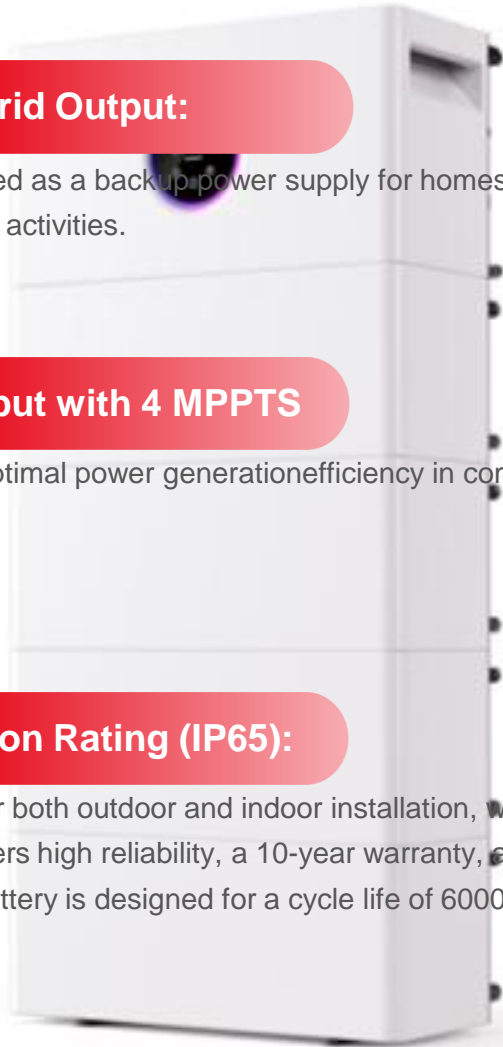
- ✓ Can be used as a backup power supply for homes or as a portable power source for outdoor activities.

2400W PV Input with 4 MPPTS

- ✓ Ensures optimal power generation efficiency in complex PV installation scenarios.

High Protection Rating (IP65):

- ✓ Suitable for both outdoor and indoor installation, withstanding wind and rain. The system offers high reliability, a 10-year warranty, and a 15-year design life. The battery is designed for a cycle life of 6000 cycles.



GOODWE
Smart Energy Innovator

THANK YOU



en.pvbm.com/products/suncake

